

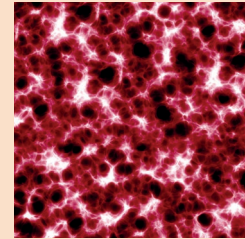


ALMA MATER STUDIORUM  
UNIVERSITÀ DI BOLOGNA  
DEPARTMENT OF EXPERIMENTAL, DIAGNOSTIC  
AND SPECIALTY MEDICINE

SERVIZIO SANITARIO REGIONALE  
EMILIA-ROMAGNA  
Azienda Ospedaliera - Università di Bologna

POLICLINICO DI  
**SANT'ORSOLA**

# 2018...2022 T-Cell Lymphomas: Finally vision and mission!



**PROGRAM**

**Bologna**  
**ROYAL HOTEL CARLTON**  
**October 25-26, 2022**

President: **Pier Luigi Zinzani**  
Co-President: **Michele Cavo**

## **Auspices**

**ALMA MATER STUDIORUM  
UNIVERSITÀ DEGLI STUDI DI BOLOGNA**

**REGIONE EMILIA-ROMAGNA**

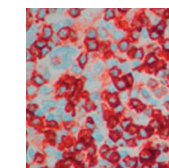
**AZIENDA OSPEDALIERO-UNIVERSITARIA  
DI BOLOGNA**

**AIL ASSOCIAZIONE ITALIANA CONTRO  
LE LEUCEMIE - LINFOMI E MIELOMA  
SEZIONE DI BOLOGNA**

**SIE - SOCIETÀ ITALIANA DI EMATOLOGIA**

## Faculty

<b>Oleg</b>	<b>Akilov</b>	Pittsburg, USA	<b>Niels</b>	<b>Odum</b>	Copenhagen, Denmark
<b>Martine</b>	<b>Bagot</b>	Paris, France	<b>Francesco</b>	<b>Onida</b>	Milan, Italy
<b>Stefan K.</b>	<b>Barta</b>	Philadelphia, USA	<b>Marco</b>	<b>Paulli</b>	Pavia, Italy
<b>Anne W.</b>	<b>Beaven</b>	Chapel Hill, USA	<b>Stefano A.</b>	<b>Pileri</b>	Milan, Italy
<b>Emilio</b>	<b>Berti</b>	Milan, Italy	<b>Nicola</b>	<b>Pimpinelli</b>	Firenze, Italy
<b>Lorenzo</b>	<b>Cerroni</b>	Graz, Austria	<b>H. Miles</b>	<b>Prince</b>	Melbourne, Australia
<b>Roberto</b>	<b>Chiarle</b>	Turin, Italy	<b>Barbara</b>	<b>Pro</b>	New York, USA
<b>Paolo</b>	<b>Corradini</b>	Milan, Italy	<b>Pietro</b>	<b>Quaglino</b>	Turin, Italy
<b>Kate</b>	<b>Cwynarski</b>	London, UK	<b>Christiane S.</b>	<b>Querfeld</b>	Duarte, USA
<b>Laurence</b>	<b>De Leval</b>	Lausanne, Switzerland	<b>Elena</b>	<b>Sabattini</b>	Bologna, Italy
<b>Francine</b>	<b>Foss</b>	New Haven, USA	<b>Barbara</b>	<b>Savoldo</b>	Houston, USA
<b>Philippe</b>	<b>Gaulard</b>	Créteil, France	<b>Julia</b>	<b>Scarisbrick</b>	Birmingham, UK
<b>Marco</b>	<b>Herling</b>	Köln, Germany	<b>Kunihiro</b>	<b>Tsukasaki</b>	Saitama, Japan
<b>Steven M.</b>	<b>Horwitz</b>	New York, USA	<b>Sean J.</b>	<b>Whittaker</b>	London, UK
<b>Giorgio G.A.</b>	<b>Inghirami</b>	New York, USA	<b>Deok-Hwan</b>	<b>Yang</b>	Seoyang-ro, Korea
<b>Javeed</b>	<b>Iqbal</b>	Omaha, USA	<b>Pier Luigi</b>	<b>Zinzani</b>	Bologna, Italy
<b>Swaminathan P.</b>	<b>Iyer</b>	Houston, USA			
<b>Elaine S.</b>	<b>Jaffe</b>	Bethesda, USA			
<b>Salvia</b>	<b>Jain</b>	Boston, USA			
<b>Won Seog</b>	<b>Kim</b>	Seoul, Korea			
<b>Youn H.</b>	<b>Kim</b>	Stanford, USA			
<b>Mika</b>	<b>Kohri</b>	Saitama, Japan			
<b>Yok Lam</b>	<b>Kwong</b>	Hong Kong, China			
<b>Enrica</b>	<b>Marchi</b>	Charlottesville, USA			
<b>Jean-Marie</b>	<b>Michot</b>	Villejuif, France			
<b>Owen A.</b>	<b>O'Connor</b>	New York, USA			



2018... 2022  
T-Cell Lymphomas:  
Finally vision and  
mission!

9.00 a.m. *Welcome and Introduction*

**A pathobiology window in the “T-cell world”**

*Chairman: S.A. Pileri*

9.15 a.m. The last new entities from the ICC - *E.S. Jaffe*

9.35 a.m. New insights in the pathogenesis - *L. de Leval*

9.55 a.m. Challenges and implications of genomics - *J. Iqbal*

10.15 a.m. Mouse models - *G.G.A. Inghirami*

**Standard treatment in front-line**

*Chairman: P. Corradini*

**How I treat:**

10.40 a.m. PTCL - *S.M. Horwitz*

11.00 a.m. CTCL - *Y.H. Kim*

11.20 a.m. ATLL - *K. Tsukasaki*

11.40 a.m. NK/T-cell lymphoma - *W.S. Kim*

12.00 p.m. Breast associated - *H.M. Prince*

12.20 p.m. Indolent T-lymphoproliferative disorders - *M. Kohri*

12.40 p.m. T-PLL - *M. Herling*

1.00 p.m. *Lunch*

**Pathology of PTCL in the molecular era**

*Chairman: S.A. Pileri*

2.00 p.m. Follicular helper T-cell lymphomas - *L. de Leval*

2.20 p.m. PTCL, not otherwise specified - *J. Iqbal*

2.40 p.m. Gamma/delta T-cell lymphomas - *P. Gaulard*

3.00 p.m. Anaplastic large cell lymphomas (BIA-excluded) - *R. Chiarle*

3.20 p.m. Breast-implant associated anaplastic large cell lymphoma - *S.A. Pileri*

**Targeting the PTCL Epigenome**

*Chairman: O.A. O’Connor*

3.50 p.m. Genetic and biological data for targeting the PTCL-Epigenome - *H.M. Prince*

4.10 p.m. Data supporting the clinical merits of epigenetic based combinations - *O.A. O’Connor*

4.30 p.m. Exploring an immunologic rationale for building novel platforms in PTCL - *E. Marchi*

**Two intriguing monoclonal antibodies**

*Chairmen: F. Onida, N. Pimpinelli*

**Brentuximab vedotin in:**

5.00 p.m. PTCL - *B. Pro*

5.20 p.m. CTCL - *H.M. Prince*

**Mogamulizumab in:**

5.40 p.m. CTCL - *Y.H. Kim*

### Immunotherapy role for T-cell lymphoma

Chairman: P.L. Zinzani

- 8.45 a.m. Pembrolizumab in NK/T-cell lymphoma - Y.L. Kwong
- 9.00 a.m. Pembrolizumab in PTCL and in CTCL - S.K. Barta
- 9.30 a.m. Tislelizumab - Y.L. Kwong
- 9.45 a.m. AFM-13 - W.S. Kim
- 10.00 a.m. Targeting CD47 in PTCL - S. Jain
- 10.15 a.m. Targeting CD47 in CTCL - O. Akilov

### CTCL: morphology, pathobiology and prognostic models

Chairmen: E. Berti, M. Paulli

- 10.45 a.m. Histology - E. Sabbatini
- 11.00 a.m. Gene expression profiling - S.J. Whittaker
- 11.15 a.m. MicroRNAs - N. Odum
- 11.30 a.m. Unusual clinicopathologic variants of CTCL - L. Cerroni
- 11.45 a.m. Prognostic models - J. Scarisbrick

### The new frontier: CAR-T

Chairman: P.L. Zinzani

- 12.15 p.m. CD30 CAR-T - A.W. Beaven
- 12.35 p.m. CAR-T cell targeting TRBC1 positive T-cell lymphoma - K. Cwynarski
- 12.55 p.m. CD30-directed CAR-T cells co-expressing CCR4 in relapsed/refractory CTCL - B. Savoldo

1.30 p.m. *Lunch*

### Emerging drugs

Chairman: P. Quaglino

- 2.30 p.m. News from the skin directed therapy - M. Bagot
- 2.45 p.m. Tipifarnib - F. Foss
- 3.00 p.m. AZD4205 (Golidocitinib) - W.S. Kim
- 3.15 p.m. ASTX660 - J.M. Michot
- 3.30 p.m. Duvelisib - S.M. Horwitz
- 3.45 p.m. Linperlisib - S.P. Iyer
- 4.00 p.m. Copanlisib - D.H. Yang
- 4.15 p.m. Lacutamab - M. Bagot
- 4.30 p.m. Valemetostat - S.M. Horwitz
- 4.45 p.m. BNZ-1 - C.S. Querfeld
- 5.00 p.m. PROTAC therapy - O.A. O'Connor
- 5.30 p.m. Conclusions and Arrivederci in 2025

## GENERAL INFORMATION

10

### MEETING VENUE

Royal Hotel Carlton  
Via Montebello, 8 - 40121 Bologna, Italy  
Phone +39 051 249361  
www.royalhotelcarltonbologna.com

### OFFICIAL LANGUAGE

English

### REGISTRATION FEE

Euro 400,00 (Italian VAT included)  
The registration fee includes: conference kit, participation in the scientific sessions, attendance certificate, coffee breaks, lunches, slides of the meeting.

### BADGE AND CERTIFICATE OF ATTENDANCE

All registered participants, speakers and sponsors will be given a badge which they must wear to be admitted to the scientific sessions. A certificate will be given to all participants at the end of the meeting.

### ITALIAN CME CREDITS

A request for Italian CME credits has been made as follows:  
- Provider Studio ER Congressi SRL: ID 828-360009  
- No. 11,2 CME credits for physicians (disciplines: Allergology and Clinical Immunology, Dermatology and Venereology, Hematology, Oncology, Pathological Anatomy, Clinical Biochemistry, Clinical Pathology), biologists and chemists  
- Educational objective: "linee guida-protocolli-procedure"

### EUROPEAN CME CREDITS

The program of the "2018...2022 T-cell lymphomas: finally vision and mission!" has been reviewed and approved for CME accreditation by the European Board for Accreditation in Hematology (EBAH), an independent accreditation body endorsed by EHA.  
The EBAH Unit has approved this educational activity for no. 15 CME credits for Physicians, Biologists and Chemists. To request credits, please fill out the form and return it to the registration desk at the end of the meeting.  
We remind you that it is necessary to have an EBAH-CME account in order to claim for credits. Attendees can create an EBAH-CME account registering on the website: <http://ebah.org> even on site.

11

## ACKNOWLEDGEMENTS

*With the unrestricted educational grant of:*



### **SCIENTIFIC SECRETARIAT**

Pier Luigi Zinzani  
Istituto di Ematologia  
“Lorenzo e Ariosto Seràgnoli”  
Via Massarenti, 9 - 40138 Bologna, Italy

### **ORGANIZING SECRETARIAT**

Studio E.R. Congressi  
Via De' Poeti, 1/7 - 40124 Bologna, Italy  
Phone +39 051 4210559  
Fax +39 051 4210174  
E-mail: [ercongressi@ercongressi.it](mailto:ercongressi@ercongressi.it)  
[www.ercongressi.it](http://www.ercongressi.it)